

## colinear Mobile Antenna for the 4m, 2m and TETRA Bands

### BESCHREIBUNG

- > External antenna whip mounted on the GPS-Combi mount.
- > GPS-antenna for fixed installations.
- > Polyethylene-covered flexible whip.
- > Easily removable whip for car wash.
- > Full hemispherical coverage.
- > Built-in high gain, low noise amplifier.
- > Right-Hand Circular Polarization antenna (RHCP).
- > 5 V supply voltage (3 V respectively 12 V available on request).
- > DC supply via RF-connector.
- > Matching unit (BBMU) included.



### SPEZIFIKATIONEN

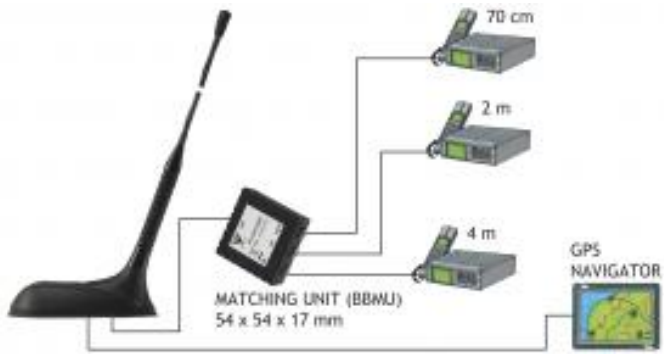
GPS-Antenne	
P1dB (GPS-Verstärker)	Approx. +7 dBm
Gewinn (GPS)	28 dBic in axial direction (typ.)
Lärmfigur (GPS-Verstärker)	< 1 dB (typ.)
Gewinn (GPS-Verstärker)	> 30 dB (typ.)
VSWR (GPS-Verstärker)	< 2.0:1
Betriebstemperaturbereich (GPS)	-35 to 75 °C
Installationsmoment (GPS)	4 ± 0.5 Nm
Frequenz (GPS)	1575 MHz
Gewicht (GPS)	0.114 kg / 0.25 lb
Stromversorgung (GPS)	5 ± 0.5 VDC (3 V resp. 12 V on request)
Stromaufnahme (GPS-Verstärker)	0.025 mA
Abmessungen (GPS)	ca. 30 x 89 mm
Farbe (GPS)	Schwarz
Materialien (GPS)	Cu-nite Messing, Edelstahl, verstärkter Thermoplast

### BESTELLUNG

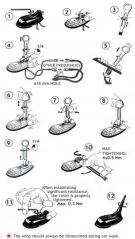
Modell	Produkt Nr	Beschreibung
GPS-C 4/2/TETRA-S BBMU	132000084	MAX.ROOF THICKNESS 2.5 mm
GPS-C 4/2/TETRA-S BBMU/7mm	132000096	ROOF THICKNESS: 3.5 - 7.5 mm

Elektrisch DE		
Modell	GPS-C 4/2/TETRA-S BBMU/...	GPS-COMBI MOUNT
Frequenz	4 m: 74.2 - 87.5 MHz 2 m: 167.5 - 174 MHz 70 cm: 380 - 400 MHz	
Antennentyp	Collinear mobile antenna	Active patch antenna
Max. Eingangsleistung	25 W	
Polarisation	Vertikal	Zirkular
Muster-Art	Halbkugelförmig	
Impedanz	50 Ω	50 Ω
VSWR	74.2 - 77.7 and 84 - 87.5 MHz: = 2.5:1 167.5 - 169.5 and 172 - 174 MHz: = 2.0:1 380 - 400 MHz: = 2.0:1	
Gewinn (EIA RS-329-1)	4 m: approx. -3 dB 2 m: approx. -4 dB 70 cm: approx. 2 dB (acc. to EIA RS-329-1)	
Kreuz-Polar-Attenuation	> 10 dB (typ.)	
Selektivität	> 45 dB down @ +/- 45 MHz	
Mechanisch DE		
Anschlusstyp	FME (male for GPS) + FME (female for mobile antenna)	
Materialien	Whip: Glass fibre whip with copper wire winding, polyethylene-covered Black-chromed brass Spring: Black-chromed stainless steel	
Farbe	Schwarz	
Maximale Dachdicke	2.5 mm / 0.10 in.	
Höhe	670 mm / 26.38 in.	
Gewicht	0.06 kg / 0.13 lb	
Montage	On the GPS-Combi mount	

ADDITIONAL DATA

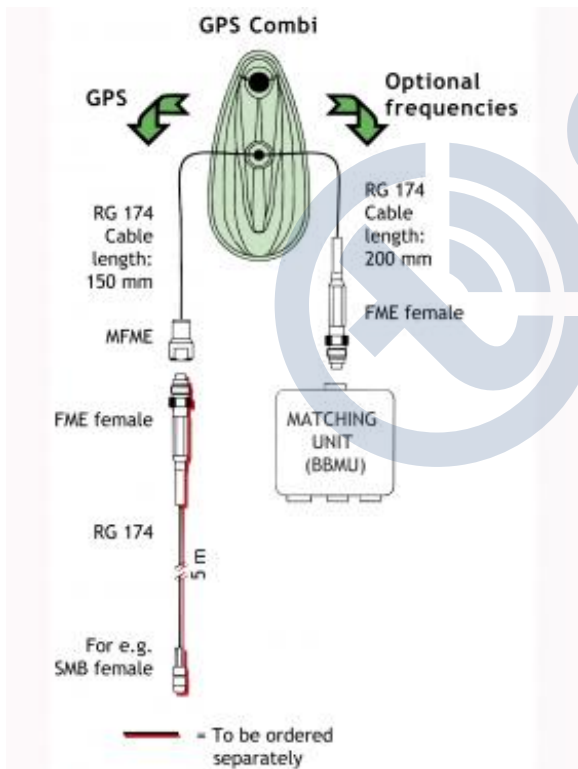


MOUNTING INSTRUCTIONS

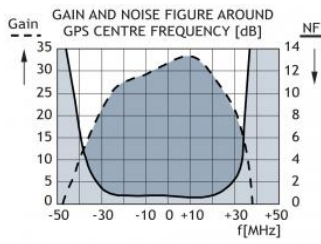
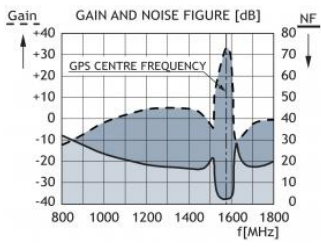


Do not use sealer on rubber gasket or other places.

CABLE MOUNTING



TYPICAL RESPONSE CURVES



VERTICAL RADIATION PATTERN

